

1) CONSTRUCTION:

CONDUCTOR: 24 AWG 7/32 STRANDED TINNED COPPER  
 INSULATION: HIGH DENSITY POLYETHYLENE, .0075" NOM. WALL THICKNESS  
 CABLE: (2) COLOR CODED SINGLES TWISTED TOGETHER TO FORM A CABLE CORE. (32 ± 2 TWISTS EVERY 2 FEET.)  
 JACKET: POLYVINYLCHLORIDE, (COLOR, PER CHART 1), .021" NOM. WALL THICKNESS OVERALL CABLE DIAMETER

NOM. DIA.  
 .024"  
 .039"  
 .078"  
 .120" MAX.  
 (BY CALIPER)

2) PHYSICAL PROPERTIES:

TEMPERATURE RATING, MAX. 60°C & 75°C  
 TEMPERATURE RATING, MIN. -20°C  
 WT./M', NOM., NET. 7.77 LBS.  
 CHART 1:

QUABBIN P/N	JACKET COLOR
5100	BLACK
5101	BROWN
5102	RED
5103	ORANGE
5104	YELLOW
5105	GREEN
5106	BLUE
5107	VIOLET
5108	GRAY
5109	WHITE
5110	BEIGE
5112	PINK

3) ELECTRICAL CHARACTERISTICS:

SEE PAGE 2

4) AGENCY APPROVALS:

NEC (UL) TYPE CM/CMG  
 CEC C(UL) TYPE CM/CMG

5) APPLICATION:

RoHS COMPLIANT MATERIALS.

6) PRINT:

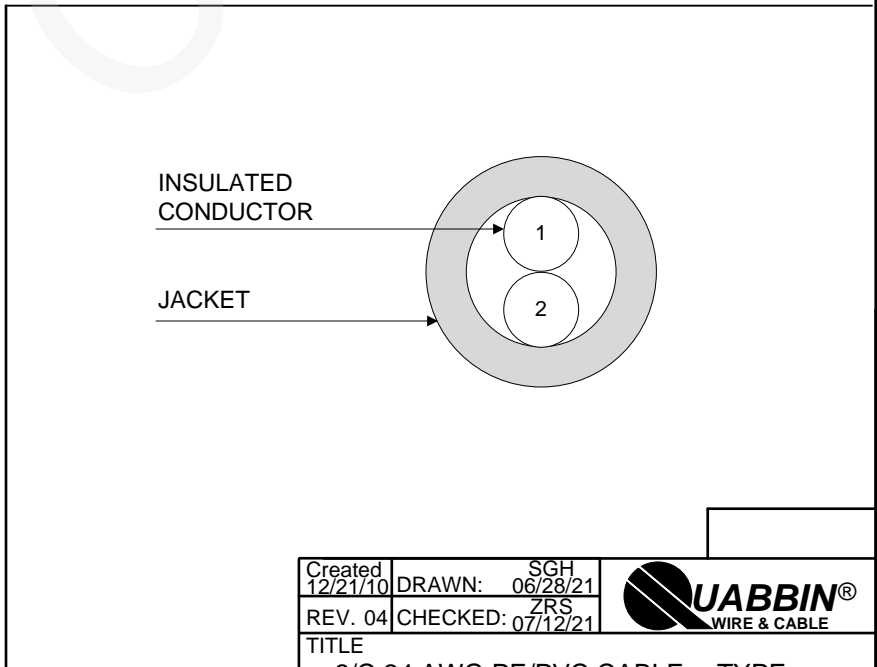
QUABBIN DATAMAX 5E 350 MHZ (P/N PER CHART 1) TYPE CM C(UL)US CMG 24 AWG 75C -- FT4/IEEE 1202 -- TIA-568.2-D CATEGORY 5e -- RoHS -- (LOT DESIGNATOR) (SEQUENTIAL FOOTAGE)

7) COLOR CODE:

1. WHITE/BLUE
2. BLUE

8) PACKAGING:

TO BE PACKAGED AS PER QWC'S STANDARD PACKAGING



CUSTOMER APPROVAL:

DATE:

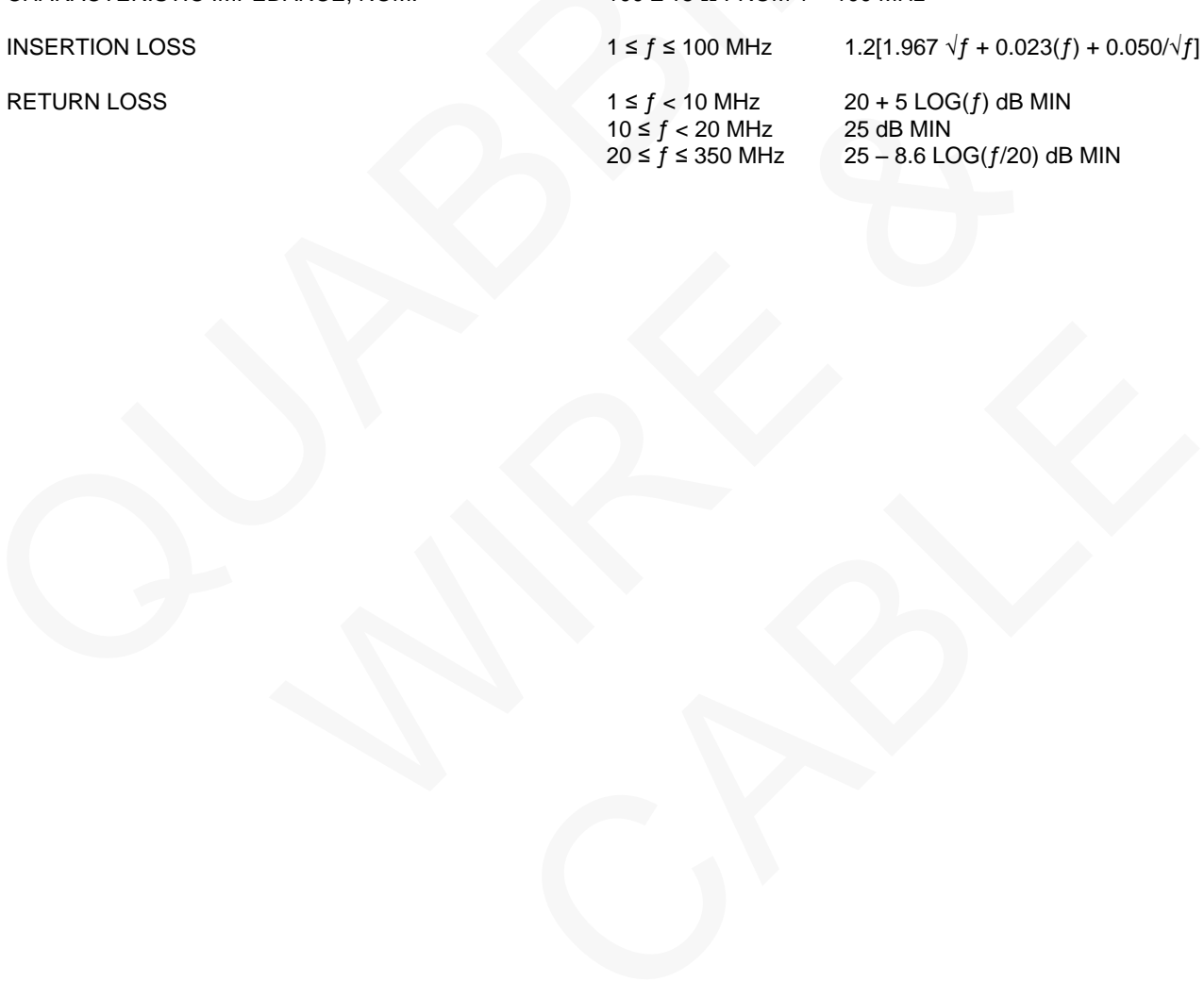
Created 12/21/10	DRAWN: SGH 06/28/21	
REV. 04	CHECKED: ZRS 07/12/21	
TITLE 2/C 24 AWG PE/PVC CABLE -- TYPE C(UL)US CM/CMG		
DRAWING#: QWC0008		1 of 2

3) ELECTRICAL CHARACTERISTICS:

CAPACITANCE, MUTUAL, NOM.	15 PF/FT.
DIELECTRIC WITHSTANDING, MIN.	1500V RMS
VOLTAGE RATING, MAX.	300V
D.C. RESISTANCE, MAX. PER ASTM B286	26.2 Ω/1000'


**NOTE:** TESTING FOR THE FOLLOWING IS CONDUCTED OFF THE REEL.

CHARACTERISTIC IMPEDANCE, NOM.	100 ± 15 Ω FROM 1 – 100 MHz	
INSERTION LOSS	1 ≤ f ≤ 100 MHz	1.2[1.967 √f + 0.023(f) + 0.050/√f] dB MAX
RETURN LOSS	1 ≤ f < 10 MHz	20 + 5 LOG(f) dB MIN
	10 ≤ f < 20 MHz	25 dB MIN
	20 ≤ f ≤ 350 MHz	25 – 8.6 LOG(f/20) dB MIN



CUSTOMER APPROVAL:

DATE:

Created 12/21/10	DRAWN: SGH 06/28/21	
REV. 04	CHECKED: ZRS 07/12/21	
TITLE 2/C 24 AWG PE/PVC CABLE -- TYPE C(UL)US CM/CMG		
DRAWING#:		QWC0008
		2 of 2